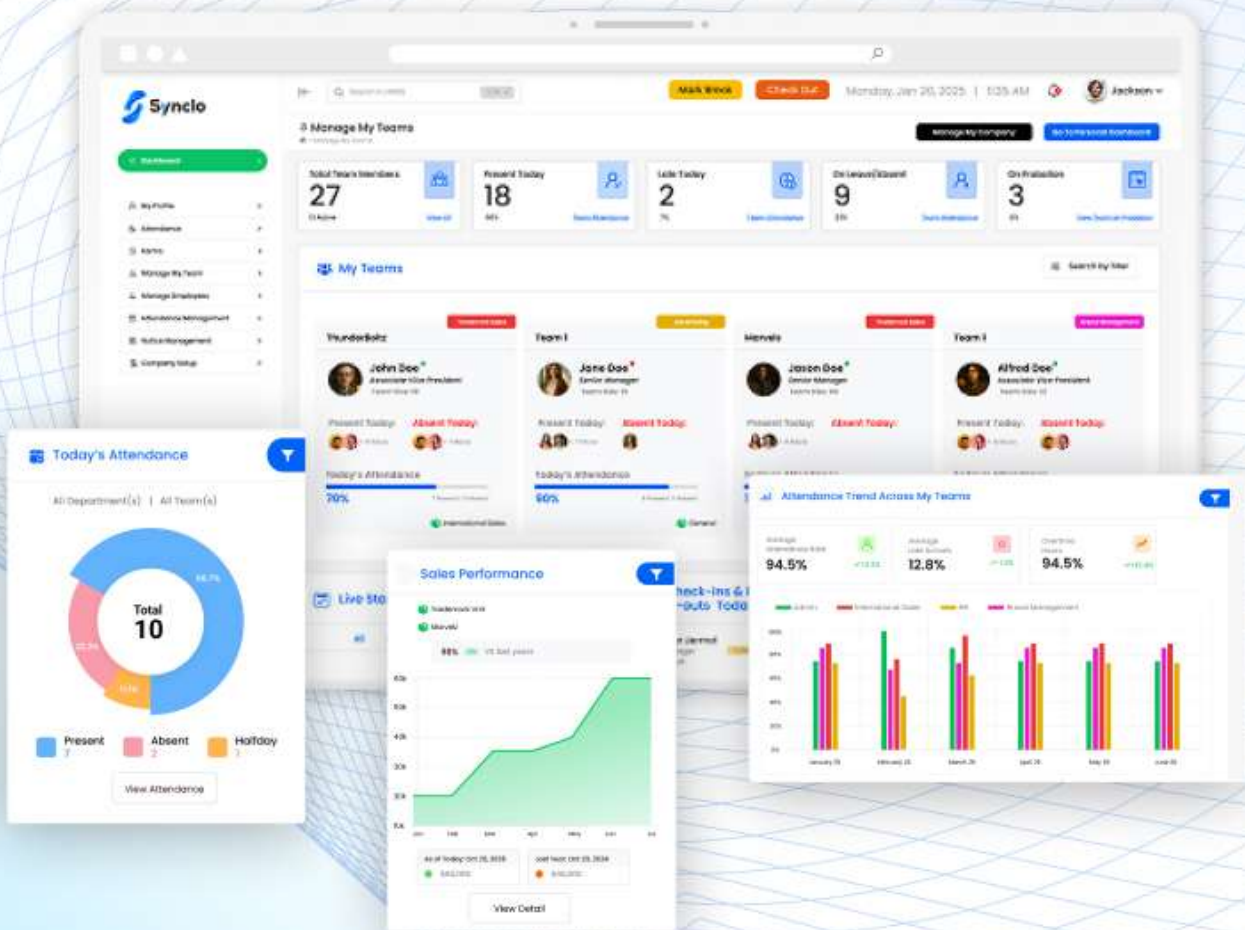




Singular Ai-Powered Replacement of All
Automation & Management Tools





ABOUT

Synclo

Synclo brings together all your critical business functions under one roof. By combining modules for Human Resources, Finance, Supply Chain, Projects, Documents, Support, and more, Synclo breaks down departmental barriers and unifies your data.

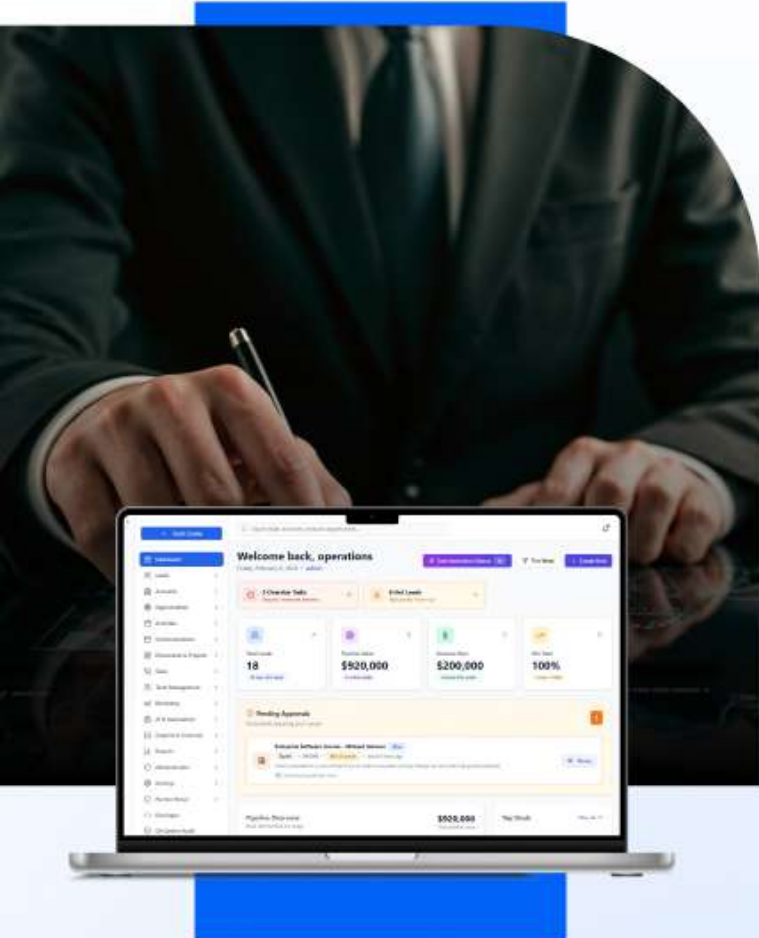
Empowering Your
Enterprise with an
**Integrated
Platform**





Synco's **PeopleSuite** module centralizes all your HR processes – from recruitment and onboarding to attendance tracking and payroll – in one platform.

- Attendance Management
- Employee Onboarding & Offboarding
- Performance & Disciplinary Management
- Employee Facilities & Recreation
- Real-Time HR Analytics & Reports



Synco's **SalesHub** module streamlines your sales process, empowering your team to manage leads, track opportunities, and close deals faster.

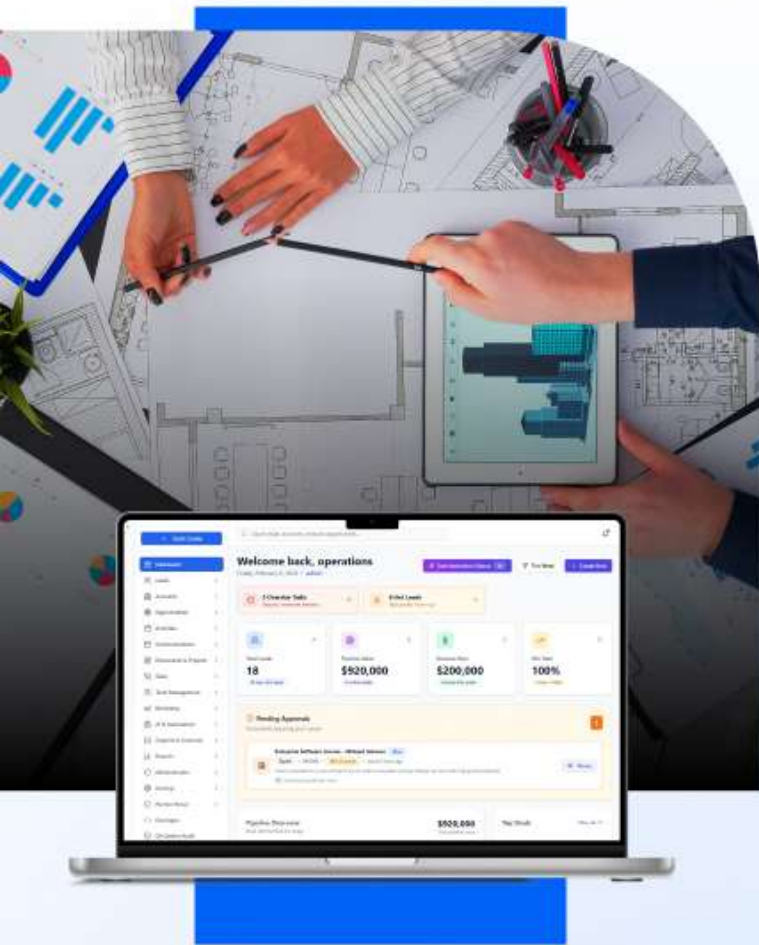
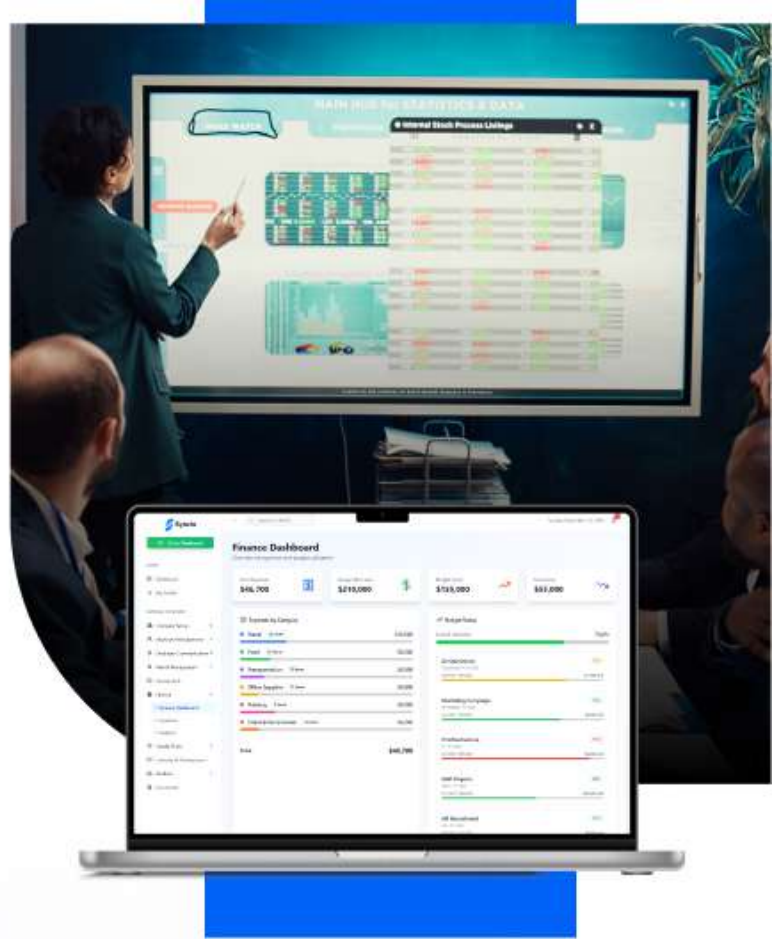
- End-to-End Lead Management
- AI-Driven Lead Scoring
- Smart Pipeline Visualization
- Automated Sales Engagement
- Real-Time Performance Insights



Smart Ledger

The **Smart Ledger** module offers a unified hub for all your financial data. From accounts payable/receivable and budgeting to expense management and tax compliance,

-  Centralized Accounting
-  Automated Payroll Management
-  Real-Time Financial Reporting
-  Expense & Revenue Tracking
-  Custom Dashboards & Analytics




Nexus

Synco's **Nexus** module connects every part of your supply chain in one system for end-to-end visibility. It streamlines procurement, inventory control,

-  Real-Time Order Tracking
-  Optimized Inventory Management
-  Vendor & Procurement Management
-  PR Requests & Approval Workflows
-  Goods Receipts, Payments & More

ProjectHub

The **Project Hub** module keeps your projects on track from initiation to completion. Synclo centralizes project tasks, timelines, resource allocation, and budgets in one intuitive interface.

- Task & Timeline Management
- Resource Allocation
- Real-Time Project Dashboards
- Workflow Automation
- Analytics & Reports



Resolve

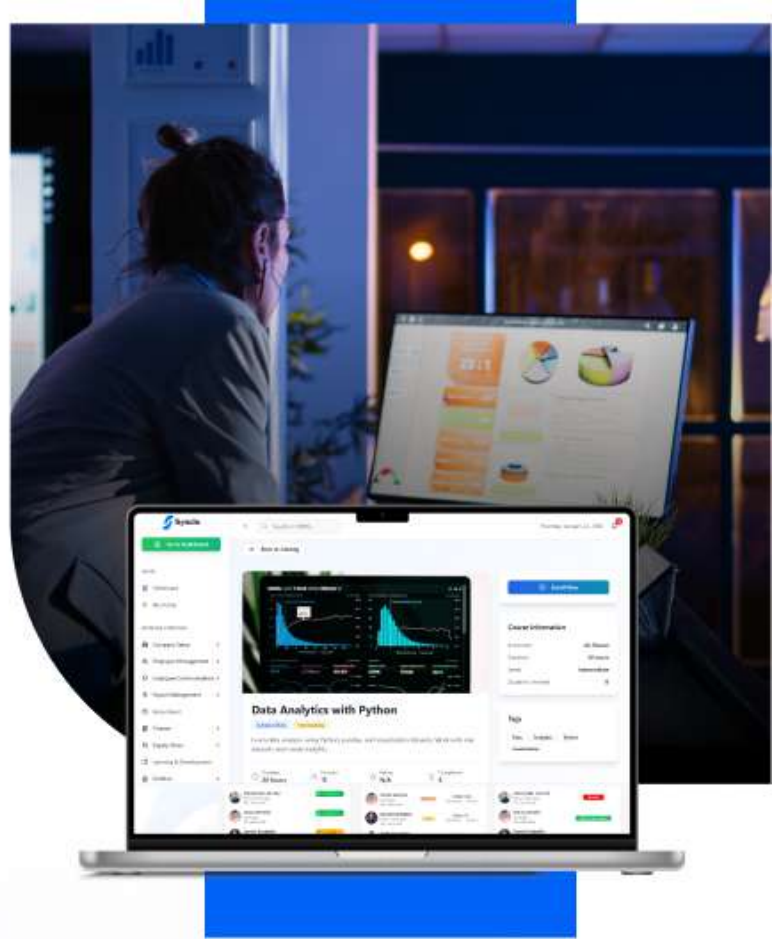
The **Resolve** module centralizes all support inquiries from customers and employees into one system for seamless issue resolution.

- Automated Ticketing:
- Real-Time Notifications:
- Multi-Channel Communication:
- AI-Powered Routing
- SLA Management



The **Academy** module provides a centralized hub for all employee training and development.

- Course Management Dashboards
- Real-Time Progress Tracking
- Certification & Compliance
- Performance-Linked Training
- Third Party Course Integrations



Synco's **HireHub** module streamlines your recruitment process, enabling your team to attract, evaluate, and on-board talent efficiently in one unified platform.

- End-to-End Candidate Management
- AI-Driven Resume Screening
- Interview & Evaluation Workflows
- Offer & Approval Management
- Real-Time Hiring Analytics & Reports



Synco's **Alci** infuses artificial intelligence across the platform to automate tasks and provide predictive insights.

- Automated Task Handling
- Predictive Analytics
- Intelligent Document Processing
- AI-Powered Compliance
- Custom AI Workflows



Built for **Every Industry.** Designed for Every Challenge

- Manufacturing
- Retail & E-commerce
- Healthcare & Pharmaceutical
- Education
- Professional Services
- Construction
- Information & Technology
- Hospitality
- Finance & Banking
- Logistics & Distribution

Synco adapts to the way different industries operate — bringing structure, visibility, and control to complex business environments. From people management to operations and compliance, our platform scales across diverse sectors with ease.



Ready to Transform Your Business?

Take the next step toward streamlined operations
and empowered teams with Synclo ERP.






Request a Demo

See Synclo ERP in action with a personalized demo to
experience how it can revolutionize your business processes



Get in Touch With Us

 /syncloerp  /syncloerp  /syncloerp

 /showcase/syncloerp/  /syncloerp

 +1 (833) 201-7494  info@synclo.com

 Bu haleeba gold building, office M2, Hor Al Anz East, Dubai



www.synclo.com